

## Contents

[Introduction](#)

[Overview of INI files](#)

[Using the INI update utility](#)

[The Update window](#)

[Using the INI editor](#)

[The Editor window](#)

[Removing unwanted sections and entries](#)

[Known limitations of INI Update](#)

[Registration Information](#)

## Introduction

INIUPD is a Windows program intended for use by Network Administrators in maintaining Microsoft Windows and Windows applications on Local Area Networks. It is designed for use in an environment where Windows is being run from a shared directory on the file server, and users' Windows configuration files are also held in directories on the file server disk. At a site where Windows is installed on local hard disks on the workstations, you won't be able to use INIUPD to update user's Windows configuration files, as it is designed to be run interactively from a single terminal to update all user configurations.

INIUPD has two main functions:

- as an INI file editor. You can change, add, or delete entries and sections from an INI file, search for a particular text string, or copy a section from the INI file you are editing to another file.
- as an INI updating utility. It will read the configuration information from the source INI file you specify, search through the entire sub-directory structure of the target directory you specify, and, depending on what options you have selected, either update all files that it finds with the same name, or create a file of that name in every directory where it finds a WIN.INI file.

## Why use it?

The marriage of Windows and LANs is an uneasy partnership at best. Give your users the freedom to manipulate their Windows setup in the same way as on a stand-alone PC and you face a horrendous task when the time comes to install updates or new software. Even if all software is run from shared directories on the server, it has usually been designed in the expectation that you will perform an individual install for every user.

INIUPD will help you to update user configurations in a network environment without having to perform an install of the software for each individual user. You perform the install once, use the editor to write the new or changed sections and entries out to the update source file, and use the update capability to propagate the new settings to every user's INI files.

## See also

[Overview of INI files](#)

[Using the INI update utility](#)

[The Update window](#)

[Using the INI editor](#)

[The Editor window](#)

[Removing unwanted sections and entries](#)

## Overview of INI files

Windows and Windows Applications use initialisation (INI) files to store configuration settings which are read at program start-up to configure Windows or the Windows application. All initialisation files have the extension ".INI" and are usually located in your Windows directory (the directory containing WIN.COM). They are plain text files, and can be viewed with the DOS TYPE command or edited with a text editor such as EDLIN or DOS EDIT.

Every Windows setup will have, at a minimum, the two main initialisation files WIN.INI and SYSTEM.INI. WIN.INI holds information about your Windows configuration and SYSTEM.INI holds information about your hardware configuration.

### The INI file format

The configuration information in INI files has the following format:

```
[section name 1]
entry one=value one
entry two=value two
...

[section name 2]
entry one=value one
...
```

Each section contains a group of settings which are related. The section name is delimited by square brackets ("[" and "]"). For example, in WIN.INI, the section called "[intl]" holds all the settings dealing with internationalisation—the country, what the currency symbol is, how dates and times are displayed, units of measurement, and so on.

Each section contains one or more entries which hold the actual settings. Each entry is of the form **entry=value**, where **entry** identifies the setting and **value** is the value of the setting. For example, in the [intl] section of WIN.INI, the entry **sCurrency=\$** sets the currency symbol to the dollar sign.

For more information on INI file settings, see the WININI.WRI and SYSINI.WRI files in your Windows directory.

### See also

[Using the INI update utility](#)

[The Update window](#)

[Using the INI editor](#)

[The Editor window](#)

[Removing unwanted sections and entries](#)

## Using the INI update utility

Before updating user files, you first need to prepare the source file by installing the new or updated software. A typical procedure for doing this would be:

- 1 Login using your LAN Administrator ID, or as a user with equivalent rights.
- 2 If the software you are installing has a network install option, perform the network install. This will not usually generate any INI files or modify your WIN.INI or SYSTEM.INI files, but merely copies the program files onto the file server disk.
- 3 Run a workstation install of the software. This is where the configuration information is updated or created.
- 4 Note any changes to WIN.INI and other INI files. A program such as the PC Magazine utility INCTRL is useful for this, as it will record these changes for you.
- 5 Using either the INI editing capabilities of INIUPD or an ASCII editor such as Notepad, create a copy of the INI file which contains only the changes.
- 6 Select the target directory under which your users' Windows configurations are installed, and specify whether the source file already exists in user directories or is a new file. If some users already have the file and some don't, check the **New File** box. INIUPD will then create the file if the user doesn't have it, or update it if it already exists.
- 7 Click on the **Update** button and all user configurations will be updated. A bar gauge at the bottom of the window gives a visual indication of the percentage of configurations which have been updated.

**Note** I strongly suggest that you first do a trial update on a single test user's configuration and test it, to verify that your source file is correct.

### See also

[Overview of INI files](#)

[The Update window](#)

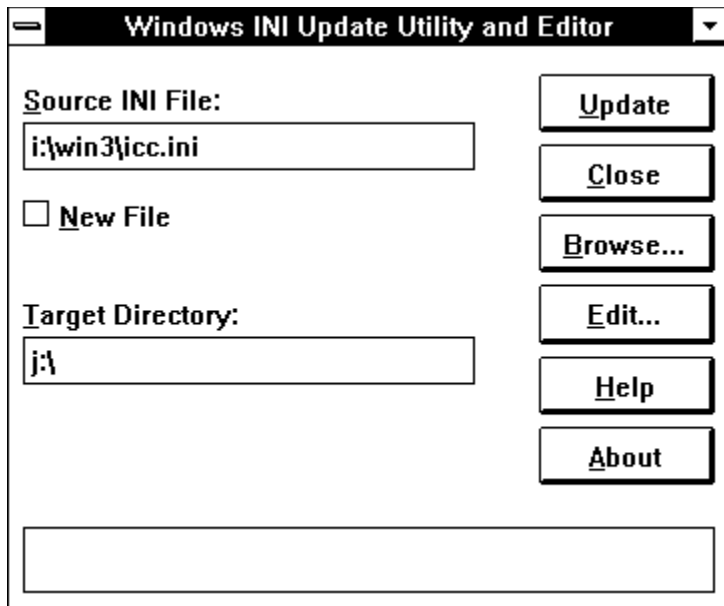
[Using the INI editor](#)

[The Editor window](#)

[Removing unwanted sections and entries](#)

## The Update window

For information on any of the window controls, click on the relevant area of the graphic below.



### See also

[Overview of INI files](#)

[Using the INI update utility](#)

[Using the INI editor](#)

[The Editor window](#)

[Removing unwanted sections and entries](#)

## Removing unwanted sections and entries

INI files, particularly WIN.INI, can become cluttered with sections and entries which are no longer used. For example, the install program for Word for Windows version 2 left all the sections for Word for Windows version 1 in the WIN.INI file. While these cause no apparent problem, the smaller your WIN.INI file, the better Windows will perform.

INIUPD can remove obsolete sections and entries from INI files. To remove an obsolete section, use an ASCII editor such as Notepad to create a source file which contains the section name with no entries. To remove an unwanted entry from a section, create a source file which contains the section and the entry with no value.

### Example

If you create a source INI file which contains only the following:

```
[Unwanted Section]
```

```
[Wanted Section]
```

```
Unwanted Entry=
```

Then using this sample file as input would remove:

- [Unwanted Section] and all its entries from all matching target files
- Unwanted Entry from [Wanted Section] in all matching target files

### See also

[Overview of INI files](#)

[Using the INI update utility](#)

[The Update window](#)

[Using the INI editor](#)

[The Editor window](#)

## Using the INI editor

You invoke the INI editor by clicking on the **Edit** button in the update utility window. With the editor, you can change, add, or delete entries and sections from an INI file, search for a particular text string, or copy a section from the INI file you are editing to another file.

### See also

[Overview of INI files](#)

[Using the INI update utility](#)

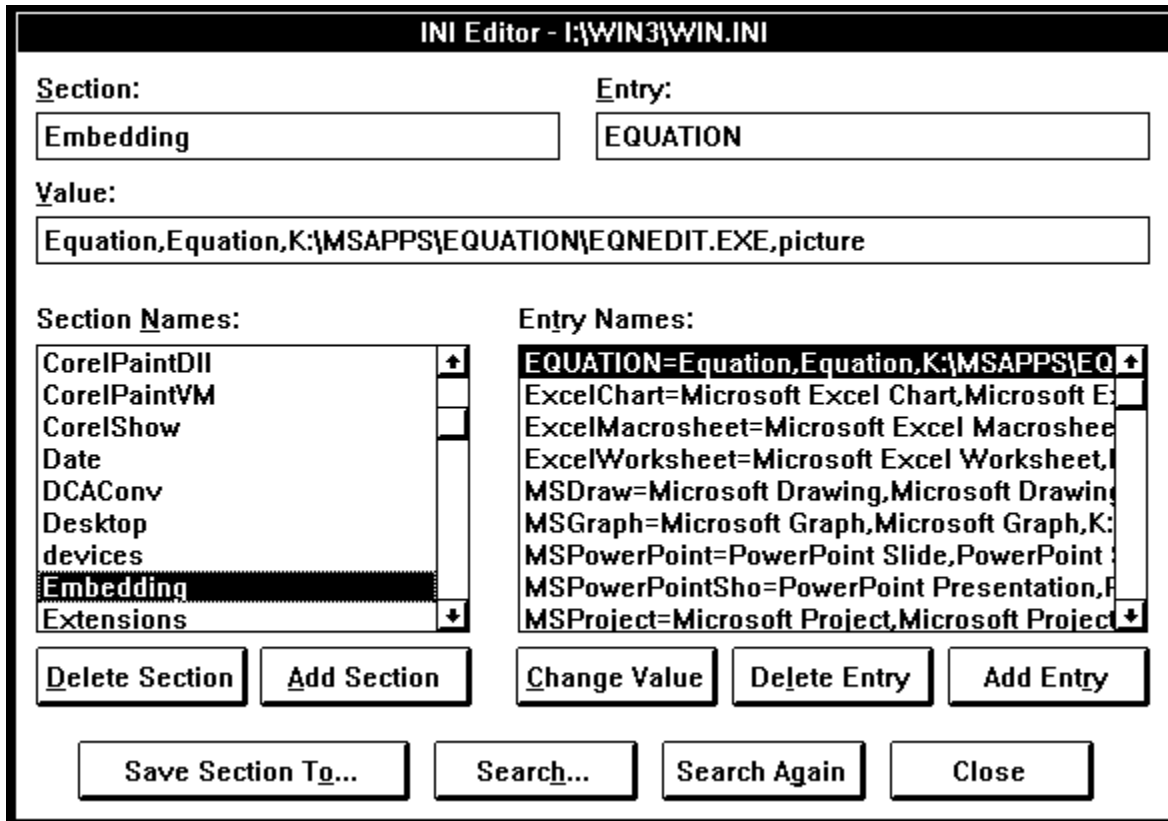
[The Update window](#)

[The Editor window](#)

[Removing unwanted sections and entries](#)

## The Editor window

For information on any of the window controls, click on the relevant area of the graphic below.



### See also

- [Overview of INI files](#)
- [Using the INI update utility](#)
- [The Update window](#)
- [Using the INI editor](#)
- [Removing unwanted sections and entries](#)



## Known limitations of INI Update

The only limitations that I know of are:

- 1 The total length of all the entry names in a particular section cannot exceed 5000 bytes. This limit applies to the names only, not the values (i.e. only the characters before the = signs).
- 2 The length of an entry value cannot exceed 200 bytes.
- 3 The program cannot edit or update the [386enh] section of SYSTEM.INI, which contains multiple device= statements. Normal INI files do not allow multiple entries with the same name within one section; SYSTEM.INI is an exception to this.
- 4 The only way to prematurely terminate a running update is to press **Ctrl+Break**. This rather untidily leaves the progress bar partly filled and the cursor as an hourglass. The program will, however, still function correctly. The cursor will remain as an hourglass while positioned over the INIUPD window until you select either **Edit**, **Update**, or **Close**.

### See also

[Using the INI update utility](#)

[The Update window](#)

[Using the INI editor](#)

[The Editor window](#)

[Removing unwanted sections and entries](#)

## Registration Information

This program is marketed as shareware. You are granted a 30 day trial period, after which you are required to register the product. The cost of a license to use the program on a single server is \$50 Australian (\$35 USD). An unlimited site license is \$500 Australian (\$350 USD).

To register the program, either:

on CompuServe, GO SWREG at any ! prompt and quote number 675

or print out the registration form included here and post to:

Nick Payne  
P.O. Box 4384  
Kingston ACT 2604  
Australia

[Click here for registration form](#)

Registered users will be sent a registration number to disable the reminder box, and will be informed of any upgrades that may become available.

I would be pleased to receive any comments, bug reports or suggestions for future releases. I may be contacted by E-Mail at:

CompuServe: 100033,432

or by post at:

PO Box 4384  
Kingston ACT 2604  
AUSTRALIA

### See also

[Shareware registration form](#)

[Entering your registration information](#)

## Shareware registration form

Select **File / Print Topic** from the menu bar to print this form.

Please complete order details (at minimum licensee name, address, and payment details) and:  
on CompuServe, GO SWREG at any ! prompt and quote number 675

or post to: Nick Payne  
P.O. Box 4384  
Kingston ACT 2604  
Australia

Use a separate order form for each licensee.

Please give an e-Mail address if you have one so I can inform you of your registration code as soon as I receive your order, and give timely information on upgrades.

---

### ORDER FORM

Name: \_\_\_\_\_

Company: \_\_\_\_\_

Address: \_\_\_\_\_

\_\_\_\_\_

\_\_\_\_\_

\_\_\_\_\_

Phone: \_\_\_\_\_ Fax: \_\_\_\_\_

CompuServe: \_\_\_\_\_

(USD equivalentents approximate only)

\_\_\_ Server licenses at AUD \$50 (USD \$35) \_\_\_\_\_

Site license at AUD \$500 (USD \$350) \_\_\_\_\_

Do you already have a copy of the program? Y/N \_\_\_\_\_

If not, please add shipping and handling

Shipping & handling (international post orders)

\_\_\_\_\_ AUD \$10 (USD \$7) \_\_\_\_\_

Total AUD \_\_\_\_\_

Enclose check/P.O./money order for total (or converted equivalent):

## Entering your registration information

To enter your registration information once you have registered INI Update and received your key:

- Click on the **Register** button in the shareware reminder box that appears when you start INI Update.
- Enter your name, company, and key EXACTLY as you received them.
- Click on **OK**.

The shareware reminder box will no longer be displayed.

Keep your registration information in a safe place. If you change machines or lose your INIUPD.INI file, you will need to re-enter your name and key.

### See also

[Shareware registration form](#)

[Registration Information](#)

## Source File

This field should contain the full path and filename of the INI file which is to be edited or which contains the updates to be applied to user files. You can use the **Browse** button to select the file from a file / directory dialog box.

## See also

[Using the INI update utility](#)

## Target Directory

This field should contain the full path to the directory containing the user files to be updated or created. All sub-directories of this directory are searched and all matching files are updated. You can use the **Browse** button to select the directory from a file / directory dialog box.

### See also

[Using the INI update utility](#)

## **New File**

If this box is unchecked, the target directory and all its sub-directories are searched for files with the same name as the source. All matching files are updated.

If this box is checked, a copy of the source INI file is created in any target directory that contains WIN.INI. Any existing files of the same name as the source which exist in the same directory as WIN.INI are updated.

## **See also**

[Using the INI update utility](#)

## **Progress gauge**

Gives a visual indication of the percentage of the total processing that has been completed.

### **See also**

[Using the INI update utility](#)



## Update

Apply the updates from the selected source file to the selected target directories. This button is not enabled until both the Source File and Target directory fields have been filled in.

## See also

[Using the INI update utility](#)

## **Close**

Terminates the program.

## **See also**

[Using the INI update utility](#)

## Browse

Brings up a file / directory common dialog box for selecting either the source file or target directory.

**Note** the Windows file / directory common dialog box requires an entry in its File Name field before you can **OK** it. When using the dialog to select the target directory, leave the dummy filename in the File Name field, even though it isn't used in the program.

## See also

[Using the INI update utility](#)

## Edit

Brings up a INI editor window with which you can browse and edit the source INI file.

## See also

[Using the INI update utility](#)

[Using the INI editor](#)

[The Editor window](#)

## Help

Opens this help file.

## See also

[Using the INI update utility](#)

## About

Brings up an informational dialog box with details about the program.

## See also

[Using the INI update utility](#)

## Section

As you browse or search the INI file, this field will update with the name of the presently selected section. You can also enter a new name in this field if you wish to create a new section in the INI file.

The status of the various push buttons at the bottom of the edit window will change as you change the value in this field, depending on what actions are valid for the present value.

## See also

[Using the INI editor](#)

## Entry

As you browse or search the INI file, this field will update with the name of the presently selected entry. You can also enter a new name in this field if you wish to create a new entry in the present section of the INI file.

The status of the various push buttons at the bottom of the edit window will change as you change the value in this field, depending on what actions are valid for the present value.

## See also

[Using the INI editor](#)



## Value

As you browse or search the INI file, this field will update with the value of the presently selected entry. You can also enter a new value in this field if you wish to change the value of an existing entry or create a new entry in the present section of the INI file.

## See also

[Using the INI editor](#)

## Section Names

This list box contains an alphabetically sorted list of the sections in the INI file. When you select a section in this list box, the Entry Names list box and the Section, Entry, and Value fields are updated.

### See also

[Using the INI editor](#)

## Entry Names

This list box contains an alphabetically sorted list of the entries in the presently selected section of the INI file. When you select an entry in this list box, the Entry and Value fields are updated.

### See also

[Using the INI editor](#)

## Delete Section

Click on this button to delete the presently selected section and all of its entries. You have to answer a dialog box confirming the deletion before the section is actually deleted.

This button will only be enabled if the section name in the Section field exists in the INI file.

### See also

[Using the INI editor](#)

[Removing unwanted sections and entries](#)

## **Add Section**

Click on this button to create a new section in the INI file. You also need to have a valid entry and value in the Entry and Value fields. That is, you can't create a section which has no entries.

This button will only be enabled if the section name in the Section field does not exist in the INI file and if there is a valid entry name in the Entry field.

### **See also**

[Using the INI editor](#)

## **Change Value**

Click on this button to change the value of the presently selected entry in the INI file to the value in the Value field.

This button will only be enabled if both the section name in the Section field and the entry name in the Entry field exist in the INI file.

### **See also**

[Using the INI editor](#)

## Delete Entry

Click on this button to delete the presently selected entry. You have to answer a dialog box confirming the deletion before the entry is actually deleted.

This button will only be enabled if both the section name in the Section field and the entry name in the Entry field exist in the INI file.

### See also

[Using the INI editor](#)

[Removing unwanted sections and entries](#)

## **Add Entry**

Click on this button to create a new entry in the presently selected section of the INI file.

This button will only be enabled if the section name in the Section field exists in the INI file and if the entry name in the Entry field does not.

### **See also**

[Using the INI editor](#)



## Save Section To

This enables you to save the presently selected section to another file. Clicking on this button brings up a file / directory dialog box where you choose the destination file.

This button will only be enabled if the section name in the Section field exists in the INI file.

### See also

[Using the INI editor](#)

## Search

Clicking on this button brings up a search dialog box where you specify the text you wish to search for, and which of Sections, Entries, and Values you wish to search in.

The search always starts at the beginning of the INI file, and proceeds alphabetically by section and by entry within section.

## See also

[Using the INI editor](#)

## **Search Again**

Clicking on this button searches through the INI file using the criteria you last specified in the search dialog box.

The search commences at the point where the previous search finished, and proceeds alphabetically by section and by entry within section.

### **See also**

[Using the INI editor](#)

## Close

Closes the INI editor window and returns you to the update window.

## See also

[Using the INI editor](#)

